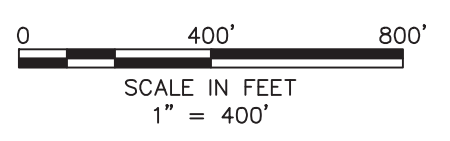
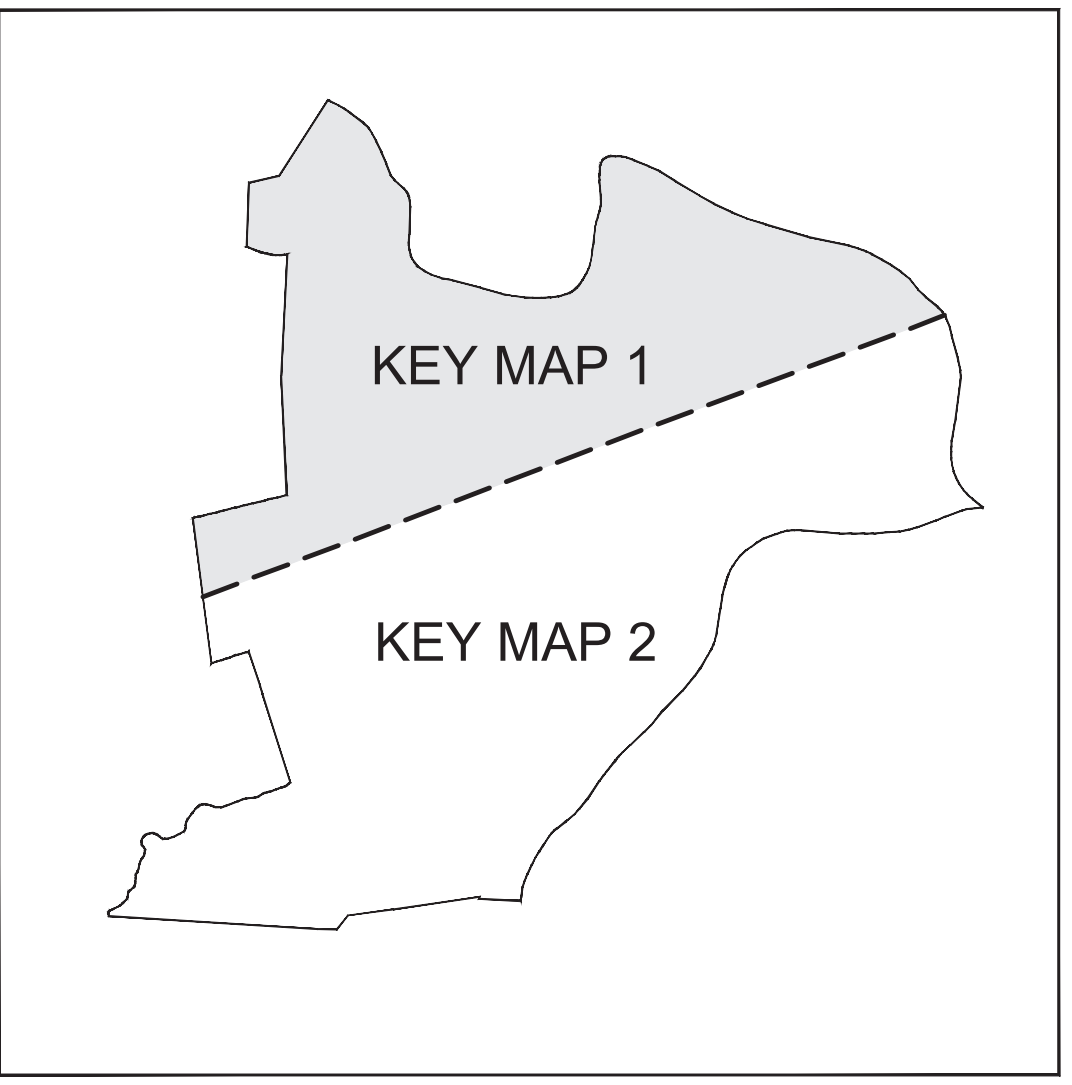
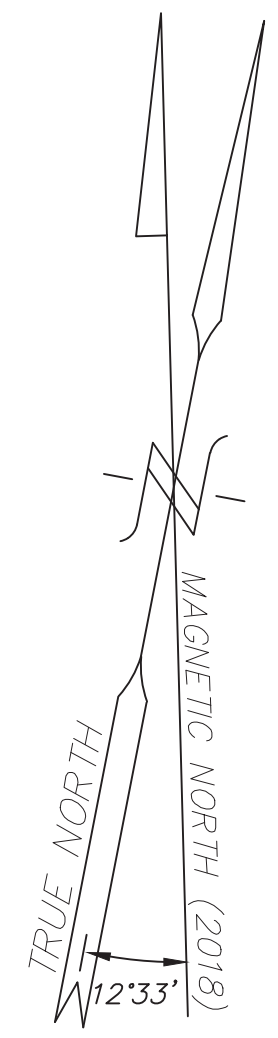
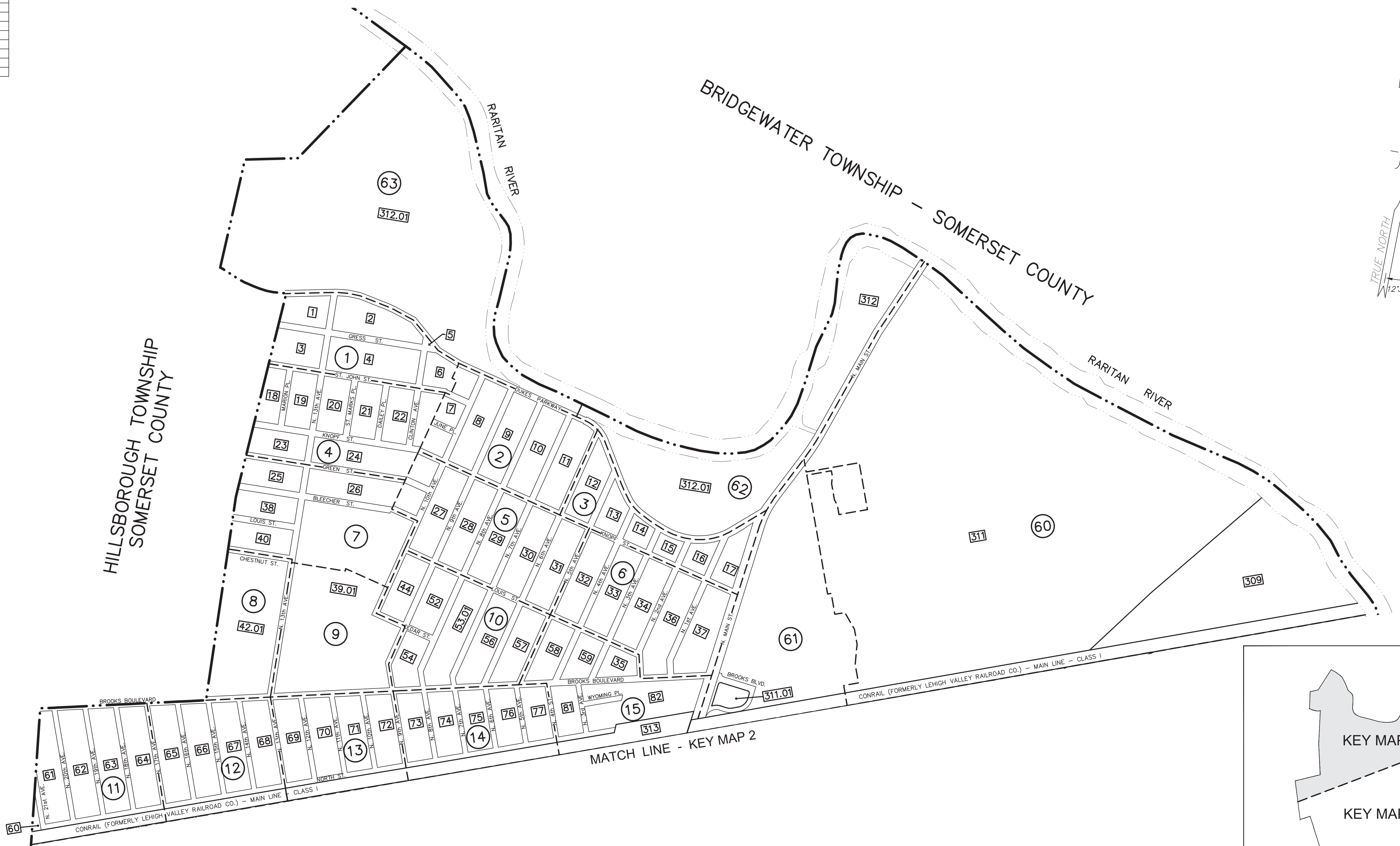


REVISIONS		
DATE	L.S. NAME	L.S. No.



LEGEND

KEY SHEETS

- 59 DETAIL SHEET NUMBER
- 32 BLOCK NUMBER
- SHEET LIMIT
- BLOCK LIMIT
- MUNICIPAL BOUNDARY

DETAIL SHEETS

- 3 BLOCK NUMBER
- 2 LOT NUMBER
- 4 LOT NUMBER - ADDITIONAL LOTS
- LOT LINE
- LOT LINE - ADDITIONAL LOTS
- BLOCK LIMIT
- MUNICIPAL BOUNDARY

THIS MAP HAS BEEN REDRAWN USING COMPUTER AIDED DRAFTING DESIGN (CADD) BASED ON THE MAP PREPARED IN 1930.

THIS TAX MAP SUPERCEDES THE TAX MAP APPROVED JULY 31, 2006, SERIAL NUMBER 897.

THE AREAS, BOUNDARIES AND DIMENSIONS SHOWN ON THIS TAX MAP ARE DERIVED FROM GROUND SURVEYS, AERIAL SURVEYS, RECORDED PLANS, MAPS, DEEDS AND WILLS AND ARE TO BE USED FOR ASSESSMENT PURPOSES ONLY.

I HEREBY CERTIFY THAT THIS MAP HAS BEEN MADE UNDER MY IMMEDIATE SUPERVISION AND COMPLIES WITH THE LAWS OF THE STATE OF NEW JERSEY.

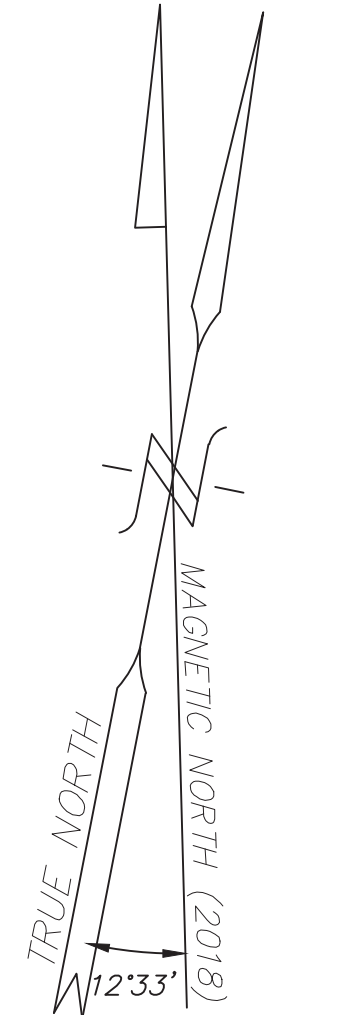
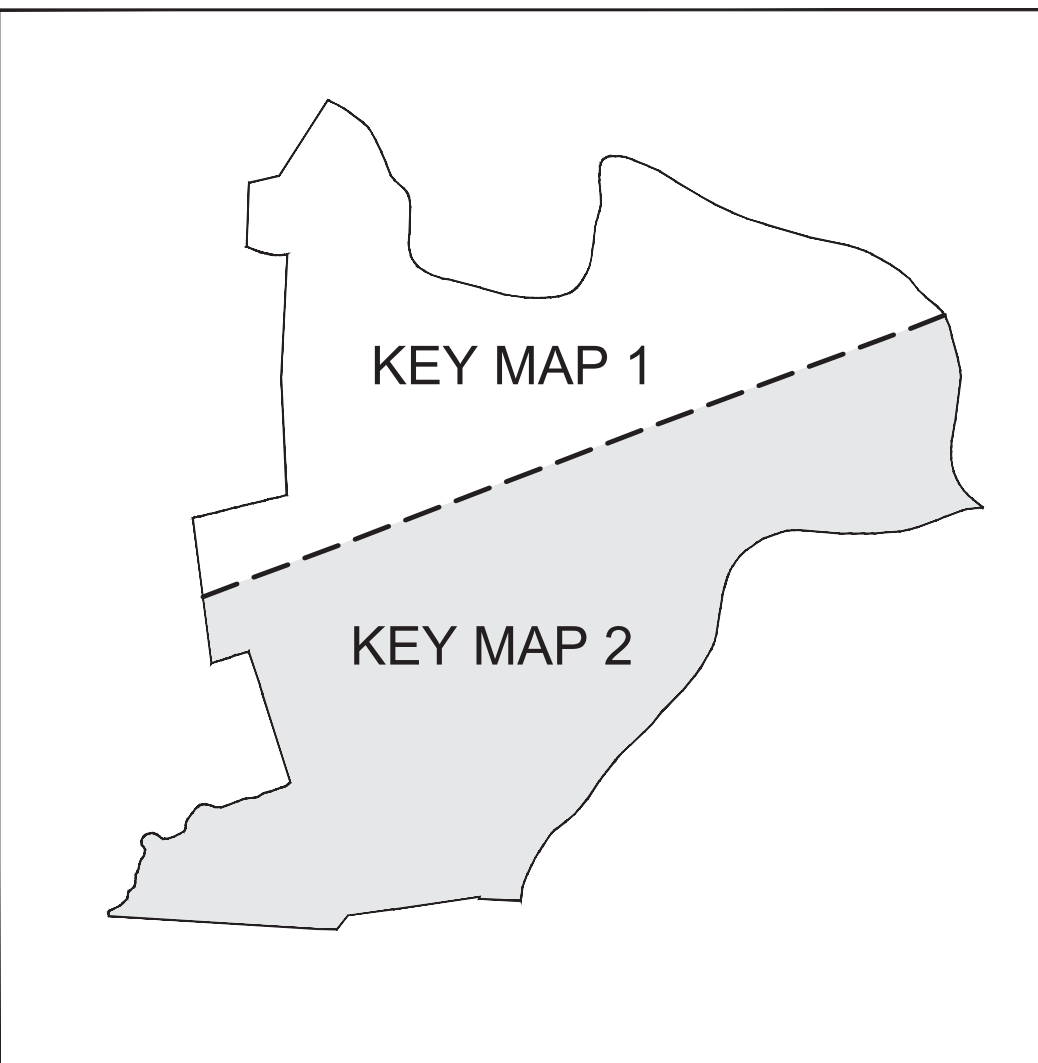
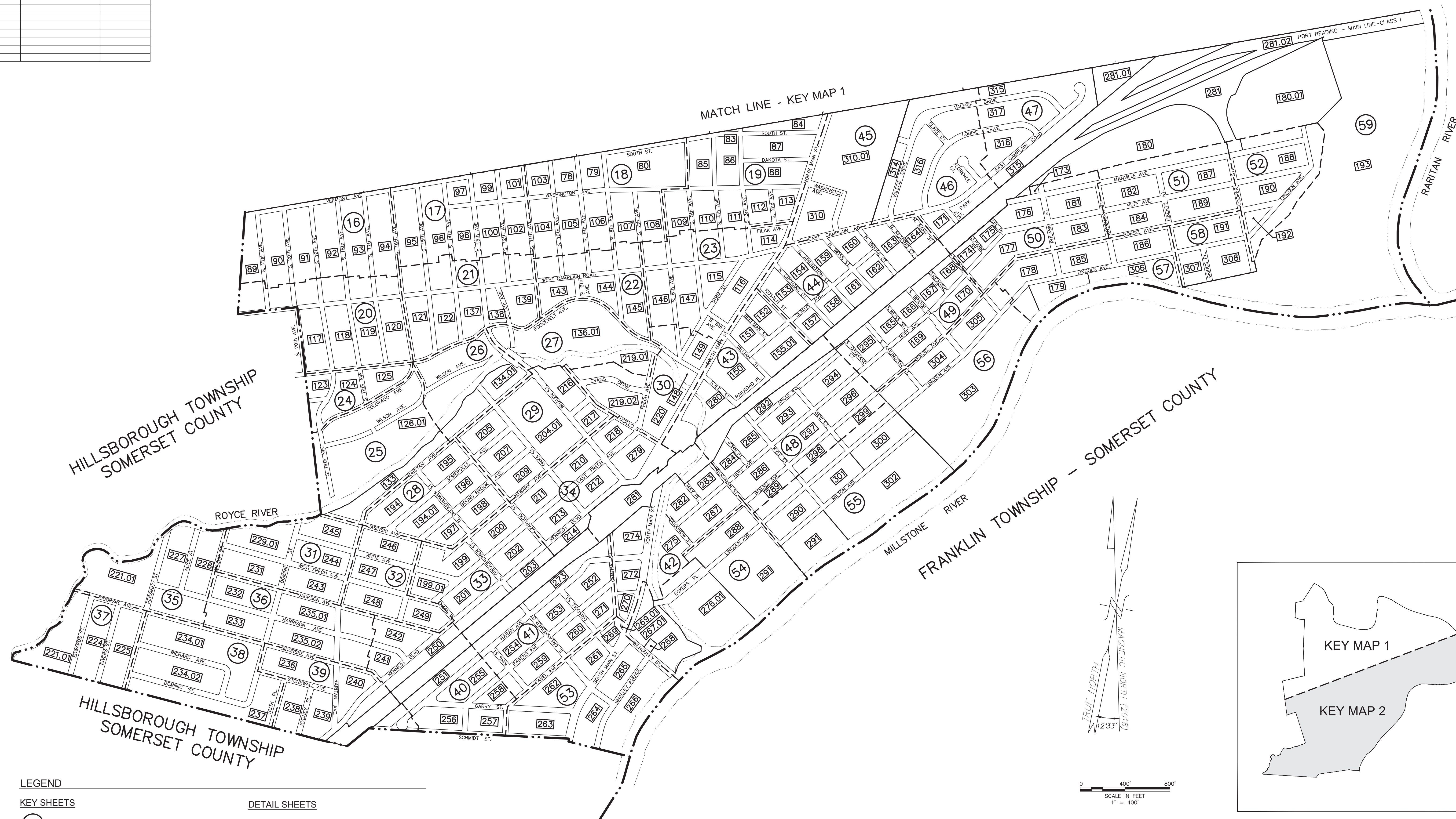
CARL M. HERRMAN, P.L.S.
PROFESSIONAL LAND SURVEYOR
NEW JERSEY LICENSE NO. GS-42271

TAX MAP
BOROUGH OF MANVILLE
SOMERSET COUNTY, NEW JERSEY
SCALE: 1"=400' AUGUST 2018
CARL M. HERRMAN, P.L.S.
VAN CLEEF ENGINEERING ASSOCIATES
755 MEMORIAL PKWY., SUITE 110, PHILLIPSBURG, NJ 08865
TO SHOW CONDITIONS AS OF AUGUST 2018

F:\Projects\2450 Manville\2450_GEN_ENG\002 Tax Maps\TAX MAP-ACAD_CONVERT\WORKING DWG\KEY MAP.dwg 8/1/2013

KEY MAP 2

REVISIONS		
DATE	L.S. NAME	L.S. No.



LEGEND	
59 (circled) DETAIL SHEET NUMBER	3 (boxed) BLOCK NUMBER
32 (boxed) BLOCK NUMBER	2 LOT NUMBER
----- SHEET LIMIT	4 LOT NUMBER - ADDITIONAL LOTS
_____ BLOCK LIMIT	_____ LOT LINE
----- MUNICIPAL BOUNDARY	_____ LOT LINE - ADDITIONAL LOTS
	----- BLOCK LIMIT
	----- MUNICIPAL BOUNDARY

THIS MAP HAS BEEN REDRAWN USING COMPUTER AIDED DRAFTING DESIGN (CADD) BASED ON THE MAP PREPARED IN 1930.

THIS TAX MAP SUPERCEDES THE TAX MAP APPROVED JULY 31, 2006, SERIAL NUMBER 897.

THE AREAS, BOUNDARIES AND DIMENSIONS SHOWN ON THIS TAX MAP ARE DERIVED FROM GROUND SURVEYS, AERIAL SURVEYS, RECORDED PLANS, MAPS, DEEDS AND WILLS AND ARE TO BE USED FOR ASSESSMENT PURPOSES ONLY.

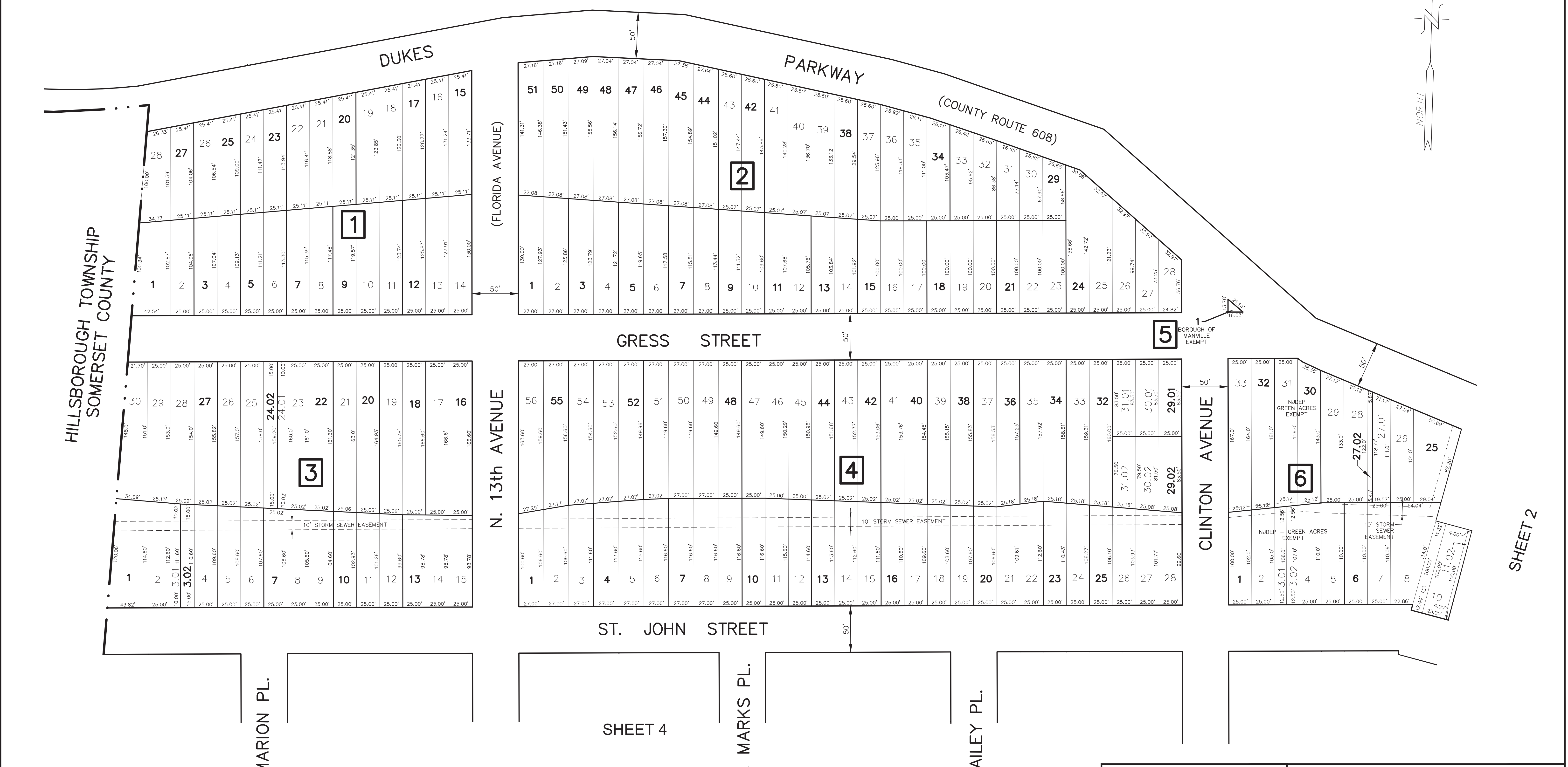
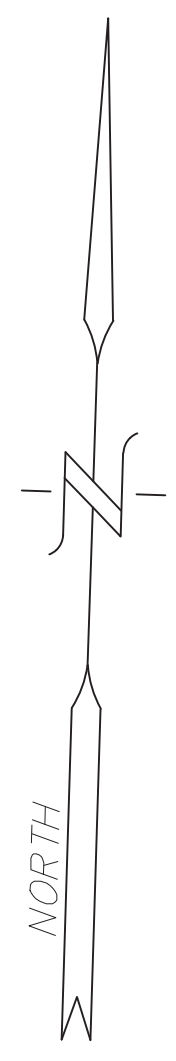
TAX MAP
BOROUGH OF MANVILLE
 SOMERSET COUNTY, NEW JERSEY
 SCALE: 1"=400' AUGUST 2018
CARL M. HERRMAN, P.L.S.
 VAN CLEEF ENGINEERING ASSOCIATES
 755 MEMORIAL PKWY., SUITE 110, PHILLIPSBURG, NJ 08865
 TO SHOW CONDITIONS AS OF AUGUST 2018

F:\Projects\2450 Manville\2450_GEN_ENG\002 Tax Maps\TAX MAP-ACAD_CONVERT_WORKING_DWG\KEY MAP.dwg 8/1/2013

KEY MAP 2

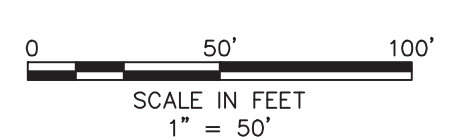
REVISIONS		
DATE	L.S. NAME	L.S. No.

SHEET 63



SHEET 2

F:\Projects\2450 Manville_2450_GEN_ENG\002 Tax Maps\TAX MAP-ACAD_CONVERT_WORKING DWG\MANVILLE TAX MAPS.dwg 8/1/2013



THIS MAP HAS BEEN REDRAWN USING COMPUTER AIDED DRAFTING DESIGN (CADD) BASED ON THE MAP PREPARED IN 1930.

THE AREAS, BOUNDARIES AND DIMENSIONS SHOWN ON THIS TAX MAP ARE DERIVED FROM GROUND SURVEYS, AERIAL SURVEYS, RECORDED PLANS, MAPS, DEEDS AND WILLS AND ARE TO BE USED FOR ASSESSMENT PURPOSES ONLY.

TAX MAP
 BOROUGH OF MANVILLE
 SOMERSET COUNTY, NEW JERSEY
 SCALE: 1"= 50' AUGUST 2018
CARL M. HERRMAN, P.L.S.
 VAN CLEEF ENGINEERING ASSOCIATES
 755 MEMORIAL PKWY., SUITE 110, PHILLIPSBURG, NJ 08865
 TO SHOW CONDITIONS AS OF: AUGUST 2018

REVISIONS		
DATE	L.S. NAME	L.S. No.



F:\Projects\2450 Manville_2450_GEN_ENG\002 Tax Maps\TAX MAP-ACAD_CONVERT_WORKING DWG\MANVILLE TAX MAPS.dwg 8/1/2013



THIS MAP HAS BEEN REDRAWN USING COMPUTER AIDED DRAFTING DESIGN (CADD) BASED ON THE MAP PREPARED IN 1930.

THE AREAS, BOUNDARIES AND DIMENSIONS SHOWN ON THIS TAX MAP ARE DERIVED FROM GROUND SURVEYS, AERIAL SURVEYS, RECORDED PLANS, MAPS, DEEDS AND WILLS AND ARE TO BE USED FOR ASSESSMENT PURPOSES ONLY.

TAX MAP
 BOROUGH OF MANVILLE
 SOMERSET COUNTY, NEW JERSEY
 SCALE: 1"= 50' AUGUST 2018
 CARL M. HERRMAN, P.L.S.
 VAN CLEEF ENGINEERING ASSOCIATES
 755 MEMORIAL PKWY., SUITE 110, PHILLIPSBURG, NJ 08865
 TO SHOW CONDITIONS AS OF: AUGUST 2018

REVISIONS		
DATE	L.S. NAME	L.S. No.

SHEET 3

KNOPF STREET
(LESTER ST.)

1	100.00'	100.00'	36
2	100.00'	100.00'	37
3	100.00'	100.00'	38
4	100.00'	100.00'	39
5	100.00'	100.00'	40
6	100.00'	100.00'	41
7	100.00'	100.00'	42
8	100.00'	100.00'	43
9	100.00'	100.00'	44
10	100.00'	100.00'	45
11	100.00'	100.00'	46
12	100.00'	100.00'	47
13	100.00'	100.00'	48
14	100.00'	100.00'	49
15	100.00'	100.00'	50
16	100.00'	100.00'	51
17	100.00'	100.00'	52
18	100.00'	100.00'	53
19	100.00'	100.00'	54
20	100.00'	100.00'	55
21	100.00'	100.00'	56
22	100.00'	100.00'	57
23	100.00'	100.00'	58
24	100.00'	100.00'	59
25	100.00'	100.00'	60
26	100.00'	100.00'	61
27	100.00'	100.00'	62
28	100.00'	100.00'	63
29	100.00'	100.00'	64
30	100.00'	100.00'	65
31	100.00'	100.00'	66
32	100.00'	100.00'	67
33	100.00'	100.00'	68
34	100.00'	100.00'	69
35	100.00'	100.00'	70

1	100.00'	100.00'	36
2	100.00'	100.00'	37
3	100.00'	100.00'	38
4	100.00'	100.00'	39
5	100.00'	100.00'	40
6	100.00'	100.00'	41
7	100.00'	100.00'	42
8	100.00'	100.00'	43
9	100.00'	100.00'	44
10	100.00'	100.00'	45
11	100.00'	100.00'	46
12	100.00'	100.00'	47
13	100.00'	100.00'	48
14	100.00'	100.00'	49
15	100.00'	100.00'	50
16	100.00'	100.00'	51
17	100.00'	100.00'	52
18	100.00'	100.00'	53
19	100.00'	100.00'	54
20	100.00'	100.00'	55
21	100.00'	100.00'	56
22	100.00'	100.00'	57
23	100.00'	100.00'	58
24	100.00'	100.00'	59
25	100.00'	100.00'	60
26	100.00'	100.00'	61
27	100.00'	100.00'	62
28	100.00'	100.00'	63
29	100.00'	100.00'	64
30	100.00'	100.00'	65
31	100.00'	100.00'	66
32	100.00'	100.00'	67
33	100.00'	100.00'	68
34	100.00'	100.00'	69
35	100.00'	100.00'	70

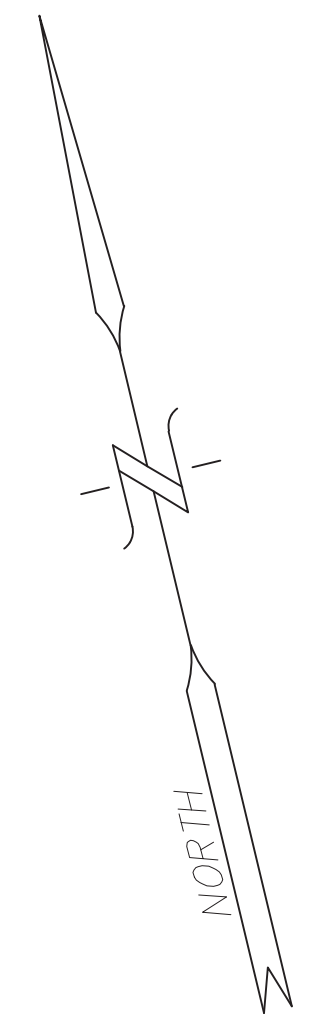
1	100.00'	100.00'	36
2	100.00'	100.00'	37
3	100.00'	100.00'	38
4	100.00'	100.00'	39
5	100.00'	100.00'	40
6	100.00'	100.00'	41
7	100.00'	100.00'	42
8	100.00'	100.00'	43
9	100.00'	100.00'	44
10	100.00'	100.00'	45
11	100.00'	100.00'	46
12	100.00'	100.00'	47
13	100.00'	100.00'	48
14	100.00'	100.00'	49
15	100.00'	100.00'	50
16	100.00'	100.00'	51
17	100.00'	100.00'	52
18	100.00'	100.00'	53
19	100.00'	100.00'	54
20	100.00'	100.00'	55
21	100.00'	100.00'	56
22	100.00'	100.00'	57
23	100.00'	100.00'	58
24	100.00'	100.00'	59
25	100.00'	100.00'	60
26	100.00'	100.00'	61
27	100.00'	100.00'	62
28	100.00'	100.00'	63
29	100.00'	100.00'	64
30	100.00'	100.00'	65
31	100.00'	100.00'	66
32	100.00'	100.00'	67
33	100.00'	100.00'	68
34	100.00'	100.00'	69
35	100.00'	100.00'	70

1	100.00'	100.00'	38
2	100.00'	100.00'	39
3	100.00'	100.00'	40
4	100.00'	100.00'	41
5	100.00'	100.00'	42
6	100.00'	100.00'	43
7	100.00'	100.00'	44
8	100.00'	100.00'	45
9	100.00'	100.00'	46
10	100.00'	100.00'	47
11	100.00'	100.00'	48
12	100.00'	100.00'	49
13	100.00'	100.00'	50
14	100.00'	100.00'	51
15	100.00'	100.00'	52
16	100.00'	100.00'	53
17	100.00'	100.00'	54
18	100.00'	100.00'	55
19	100.00'	100.00'	56
20	100.00'	100.00'	57
21	100.00'	100.00'	58
22	100.00'	100.00'	59
23	100.00'	100.00'	60
24	100.00'	100.00'	61
25	100.00'	100.00'	62
26	100.00'	100.00'	63
27	100.00'	100.00'	64
28	100.00'	100.00'	65
29	100.00'	100.00'	66
30	100.00'	100.00'	67
31	100.00'	100.00'	68
32	100.00'	100.00'	69
33	100.00'	100.00'	70

1	100.00'	99.85'	32
2	100.00'	102.33'	33
3	100.00'	104.71'	34
4	100.00'	107.08'	35
5	100.00'	109.46'	36
6	100.00'	111.84'	37
7	100.00'	114.22'	38
8	100.00'	116.60'	39
9	100.00'	118.98'	40
10	100.00'	121.36'	41
11	100.00'	123.74'	42
12	100.00'	126.12'	43
13	100.00'	128.50'	44
14	100.00'	130.87'	45
15	100.00'	133.25'	46
16	100.00'	135.63'	47
17	100.00'	138.01'	48
18	100.00'	140.39'	49
19	100.00'	142.77'	50
20	100.00'	145.15'	51
21	100.00'	147.53'	52
22	100.00'	149.90'	53
23	100.00'	152.28'	54
24	100.00'	154.66'	55
25	100.00'	157.04'	56
26	100.00'	158.42'	57
27	100.00'	159.80'	58
28	100.00'	161.18'	59
29	100.00'	162.56'	60
30	100.00'	163.94'	61
31	100.00'	165.32'	62
32	100.00'	166.70'	63
33	100.00'	168.08'	64
34	100.00'	169.46'	65
35	100.00'	170.84'	66
36	100.00'	172.22'	67
37	100.00'	173.60'	68
38	100.00'	174.98'	69
39	100.00'	176.36'	70

N. MAIN STREET

(MILLSTONE ROAD)
(COUNTY ROUTE 533)

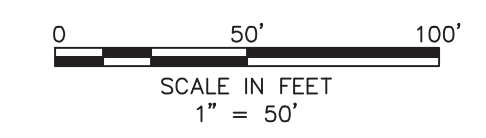


SHEET 61

THIS MAP HAS BEEN REDRAWN USING COMPUTER AIDED DRAFTING DESIGN (CADD) BASED ON THE MAP PREPARED IN 1930.

THE AREAS, BOUNDARIES AND DIMENSIONS SHOWN ON THIS TAX MAP ARE DERIVED FROM GROUND SURVEYS, AERIAL SURVEYS, RECORDED PLANS, MAPS, DEEDS AND WILLS AND ARE TO BE USED FOR ASSESSMENT PURPOSES ONLY.

TAX MAP
BOROUGH OF MANVILLE
 SOMERSET COUNTY, NEW JERSEY
 SCALE: 1"= 50' AUGUST 2018
CARL M. HERRMAN, P.L.S.
 VAN CLEEF ENGINEERING ASSOCIATES
 755 MEMORIAL PKWY., SUITE 110, PHILLIPSBURG, NJ 08865
 TO SHOW CONDITIONS AS OF: AUGUST 2018



SHEET 15

LOUIS STREET

(HENRY STREET)

BROOKS BOULEVARD

SHEET 5

(UTAH AVE.)

N. 5th AVENUE

(VIRGINIA AVE.)

N. 4th AVENUE

(WYOMING AVE.)

N. 3rd AVENUE

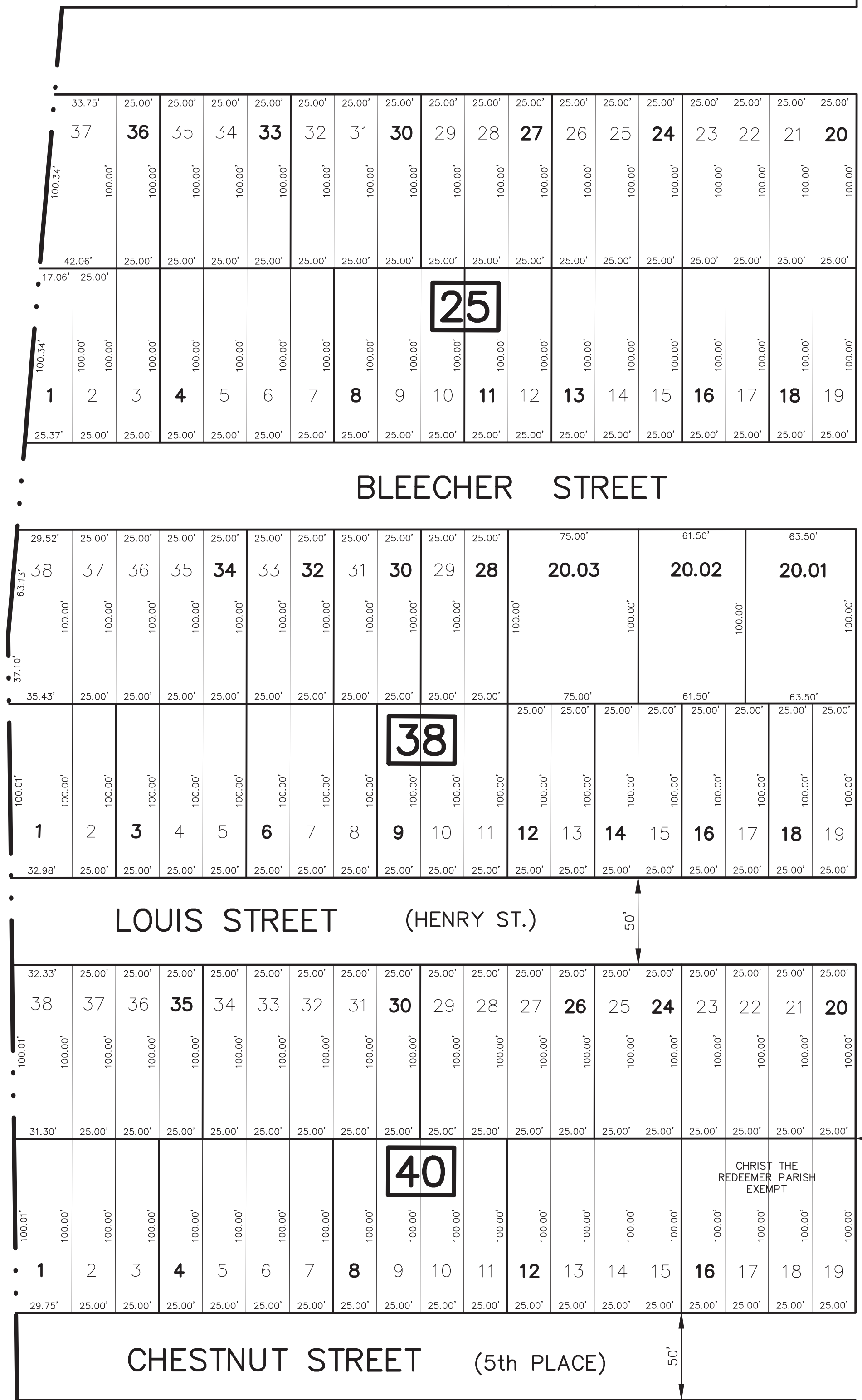
N. 2nd AVENUE

N. 1st AVENUE

REVISIONS		
DATE	L.S. NAME	L.S. No.

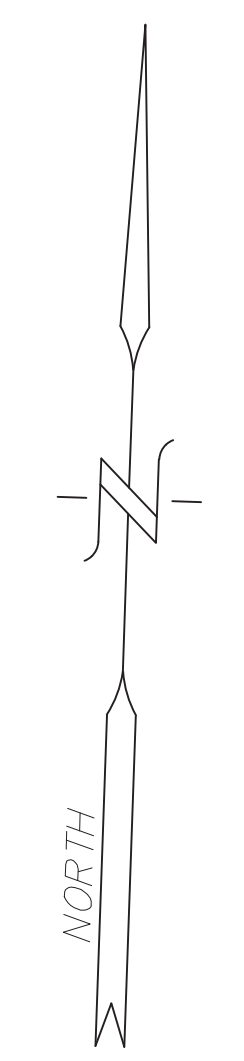
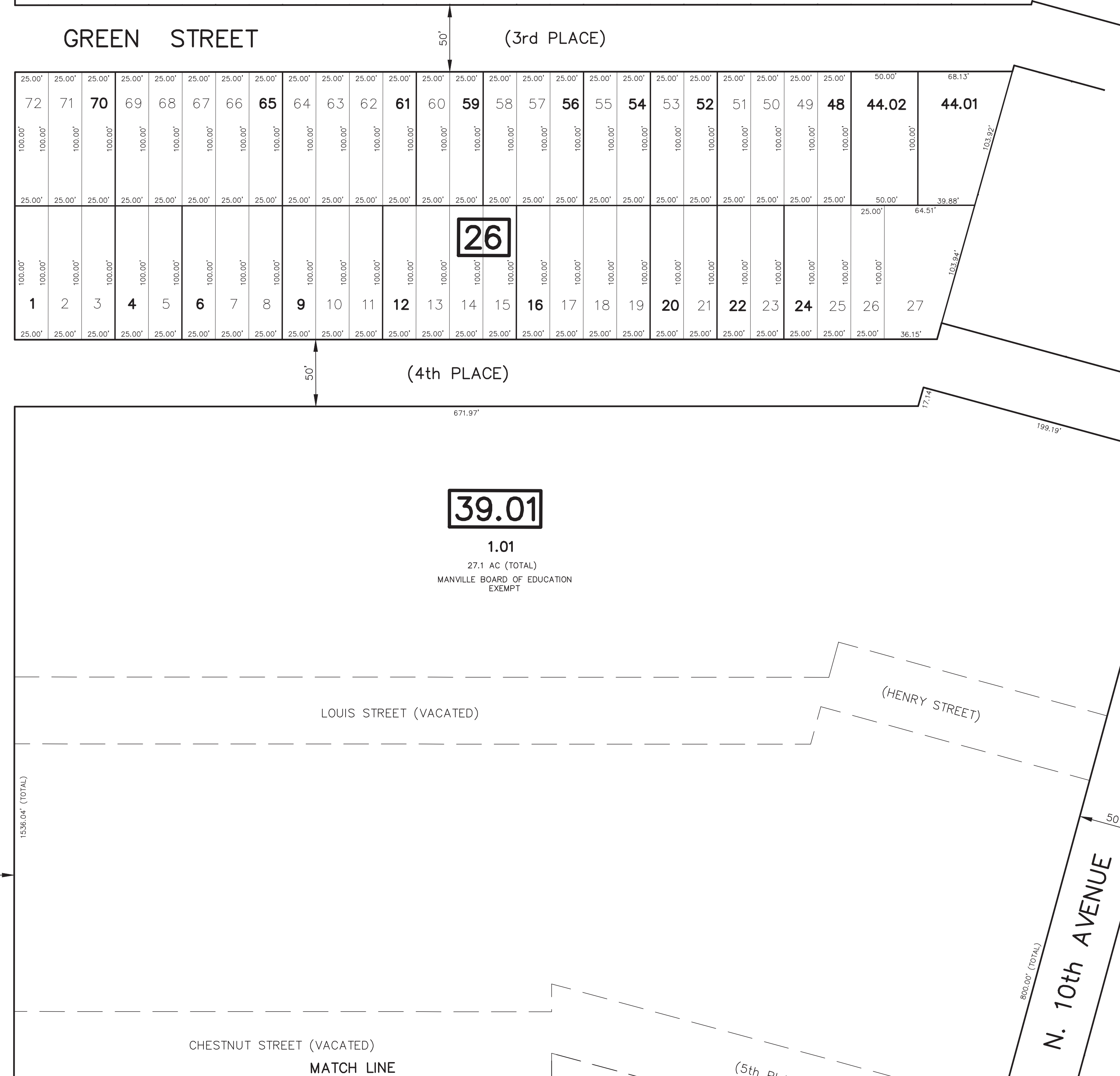
SHEET 4

SOMERSET COUNTY
HILLSBOROUGH TOWNSHIP



(FLORIDA AVE.)

N. 13th AVENUE

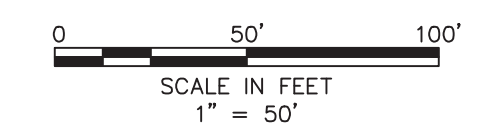


SHEET 5

SHEET 8

SHEET 9

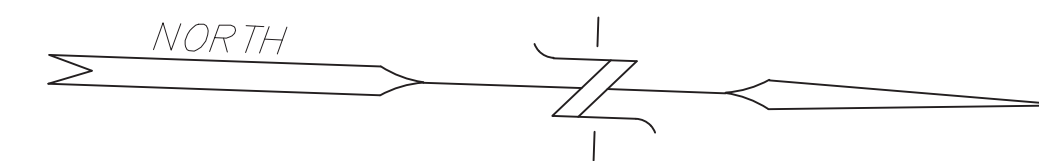
TAX MAP
 BOROUGH OF MANVILLE
 SOMERSET COUNTY, NEW JERSEY
 SCALE: 1"= 50' AUGUST 2018
 CARL M. HERRMAN, P.L.S.
 VAN CLEEF ENGINEERING ASSOCIATES
 755 MEMORIAL PKWY., SUITE 110, PHILLIPSBURG, NJ 08865
 TO SHOW CONDITIONS AS OF: AUGUST 2018



THIS MAP HAS BEEN REDRAWN USING COMPUTER AIDED DRAFTING DESIGN (CADD) BASED ON THE MAP PREPARED IN 1930.

THE AREAS, BOUNDARIES AND DIMENSIONS SHOWN ON THIS TAX MAP ARE DERIVED FROM GROUND SURVEYS, AERIAL SURVEYS, RECORDED PLANS, MAPS, DEEDS AND WILLS AND ARE TO BE USED FOR ASSESSMENT PURPOSES ONLY.

REVISIONS		
DATE	L.S. NAME	L.S. No.



HILLSBOROUGH TOWNSHIP SOMERSET COUNTY

SHEET 12

SHEET 7

N. 15th AVE.
(CONNECTICUT AVE.)

N. 14th AVE.
(DELAWARE AVE.)

BROOKS BOULEVARD

1.03
1.17 AC.

1.04
1.04 AC.

42.01

1.021
4.62 ACRES
4.10 AC. CONSERVATION EASEMENT
0.61 AC. UNRESTRICTED COMMON AREA

1.01
5.18 AC.
CHRIST THE REDEEMER PARISH
EXEMPT

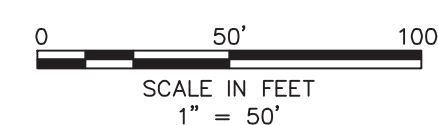
1.024
54.12'
1.023
54.12'
1.022
54.12'

1.025
54.12'
1.026
54.12'
1.027
54.12'
1.028
54.12'
1.029
54.12'

N. 13th AVENUE (FLORIDA AVE.)

CHESTNUT STREET (5th PLACE)

SHEET 9



THIS MAP HAS BEEN REDRAWN USING COMPUTER AIDED DRAFTING DESIGN (CADD) BASED ON THE MAP PREPARED IN 1930.

THE AREAS, BOUNDARIES AND DIMENSIONS SHOWN ON THIS TAX MAP ARE DERIVED FROM GROUND SURVEYS, AERIAL SURVEYS, RECORDED PLANS, MAPS, DEEDS AND WILLS AND ARE TO BE USED FOR ASSESSMENT PURPOSES ONLY.

TAX MAP
BOROUGH OF MANVILLE
SOMERSET COUNTY, NEW JERSEY
SCALE: 1"= 50' AUGUST 2018
CARL M. HERRMAN, P.L.S.
VAN CLEEF ENGINEERING ASSOCIATES
755 MEMORIAL PKWY., SUITE 110, PHILLIPSBURG, NJ 08865
TO SHOW CONDITIONS AS OF: AUGUST 2018

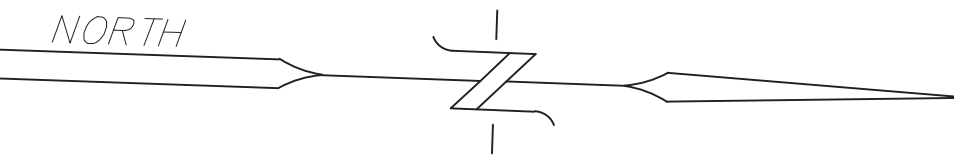
REVISIONS		
DATE	L.S. NAME	L.S. No.

SHEET 8

N. 13th AVENUE (FLORIDA AVE.)

39.01

1.01
27.1 AC (TOTAL)
MANVILLE BOARD OF EDUCATION
EXEMPT



SHEET 7

SHEET 13

N. 12th AVENUE (GEORGIA AVE.)

N. 11th AVENUE (INDIANA AVE.)

BROOKS BOULEVARD

N. 10th AVENUE (JERSEY AVE.)

OAK STREET (VACATED)

MAPLE STREET (VACATED)

CEDAR STREET (VACATED)

MATCH LINE

N. 10th AVENUE (VACATED)

(HERBERT STREET)

N. 10th AVE. (JERSEY AVE.)

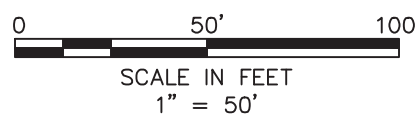
N. 9th AVENUE (KENTUCKY AVE.)

CEDAR STREET

THIS MAP HAS BEEN REDRAWN USING COMPUTER AIDED DRAFTING DESIGN (CADD) BASED ON THE MAP PREPARED IN 1930.

THE AREAS, BOUNDARIES AND DIMENSIONS SHOWN ON THIS TAX MAP ARE DERIVED FROM GROUND SURVEYS, AERIAL SURVEYS, RECORDED PLANS, MAPS, DEEDS AND WILLS AND ARE TO BE USED FOR ASSESSMENT PURPOSES ONLY.

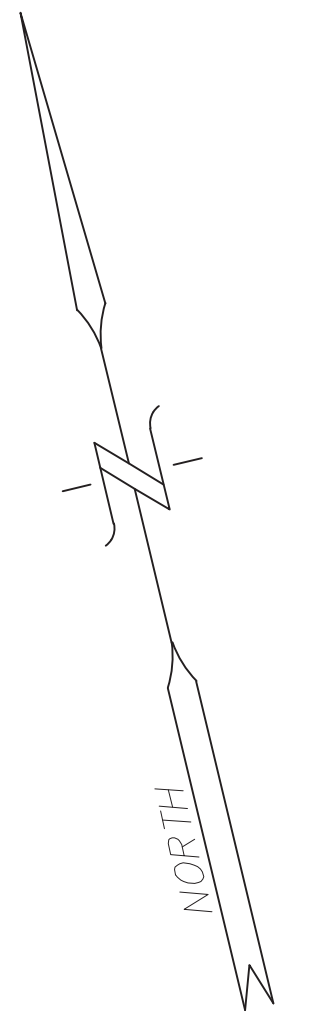
TAX MAP
BOROUGH OF MANVILLE
 SOMERSET COUNTY, NEW JERSEY
 SCALE: 1"= 50' AUGUST 2018
CARL M. HERRMAN, P.L.S.
 VAN CLEEF ENGINEERING ASSOCIATES
 755 MEMORIAL PKWY., SUITE 110, PHILLIPSBURG, NJ 08865
 TO SHOW CONDITIONS AS OF: AUGUST 2018



SHEET 10

F:\Projects\2450 Manville\2450_GEN_ENG\002 Tax Maps\TAX MAP-ACAD_CONVERT_WORKING DWG\MANVILLE TAX MAPS.dwg 8/1/2013

REVISIONS		
DATE	L.S. NAME	L.S. No.



SHEET 7

SHEET 9



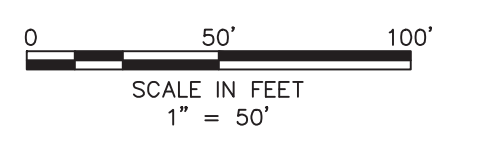
SHEET 5

SHEET 15

F:\Projects\2450 Manville_2450_GEN_ENG\002 Tax Maps\TAX MAP-ACAD_CONVERT_WORKING DWG\MANVILLE TAX MAPS.dwg 8/1/2013

THIS MAP HAS BEEN REDRAWN USING COMPUTER AIDED DRAFTING DESIGN (CADD) BASED ON THE MAP PREPARED IN 1930.

THE AREAS, BOUNDARIES AND DIMENSIONS SHOWN ON THIS TAX MAP ARE DERIVED FROM GROUND SURVEYS, AERIAL SURVEYS, RECORDED PLANS, MAPS, DEEDS AND WILLS AND ARE TO BE USED FOR ASSESSMENT PURPOSES ONLY.



TAX MAP
 BOROUGH OF MANVILLE
 SOMERSET COUNTY, NEW JERSEY
 SCALE: 1"= 50' AUGUST 2018
 CARL M. HERRMAN, P.L.S.
 VAN CLEEF ENGINEERING ASSOCIATES
 755 MEMORIAL PKWY., SUITE 110, PHILLIPSBURG, NJ 08865
 TO SHOW CONDITIONS AS OF: AUGUST 2018

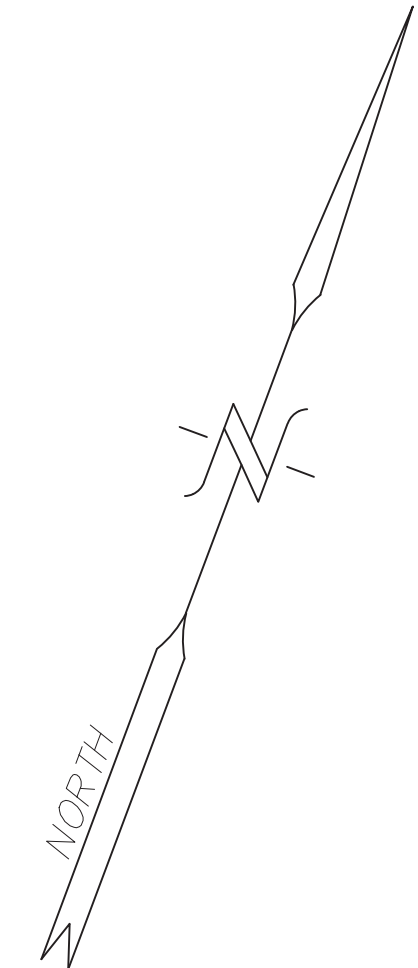
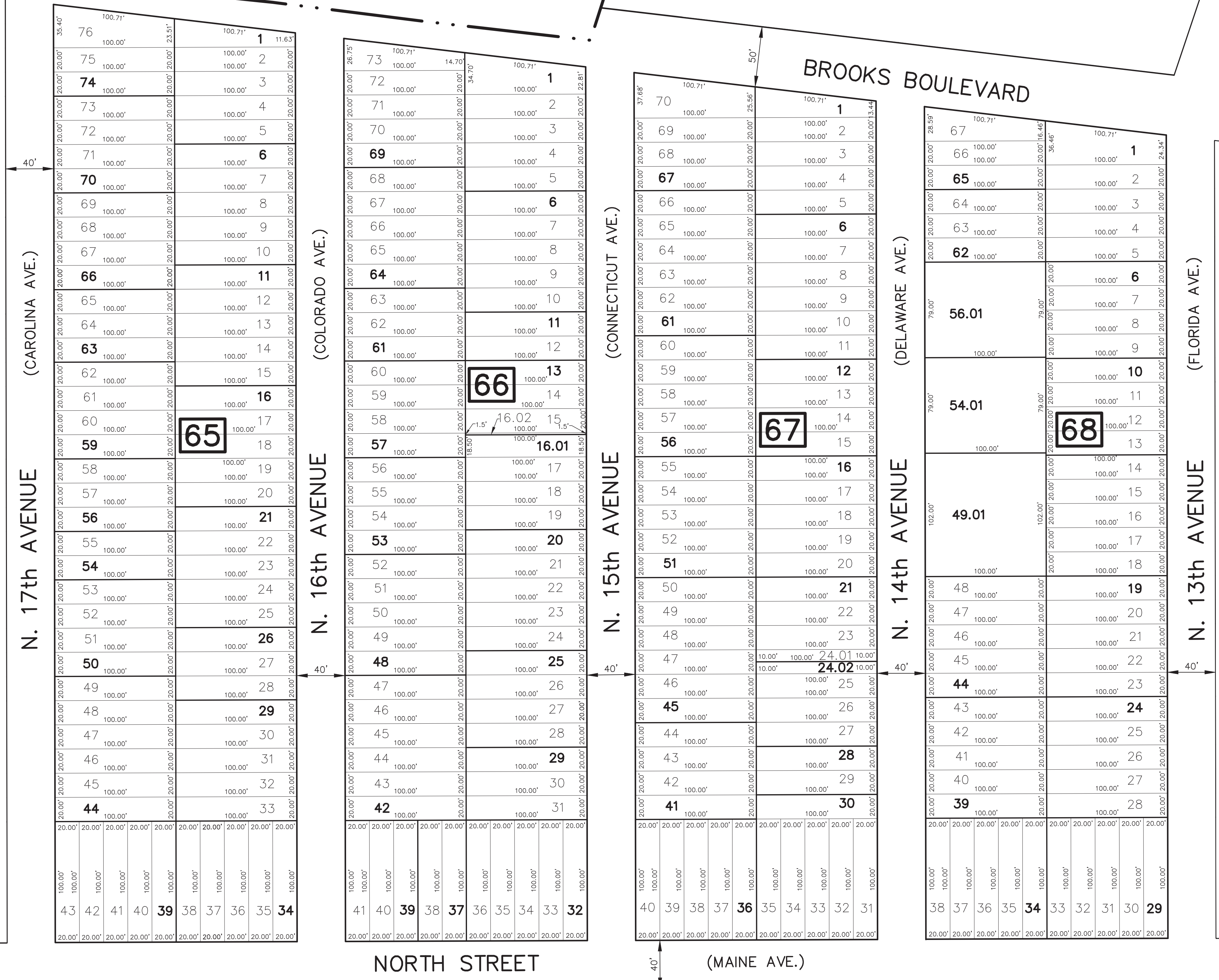
REVISIONS		
DATE	L.S. NAME	L.S. No.

HILLSBOROUGH TOWNSHIP
SOMERSET COUNTY

SHEET 8

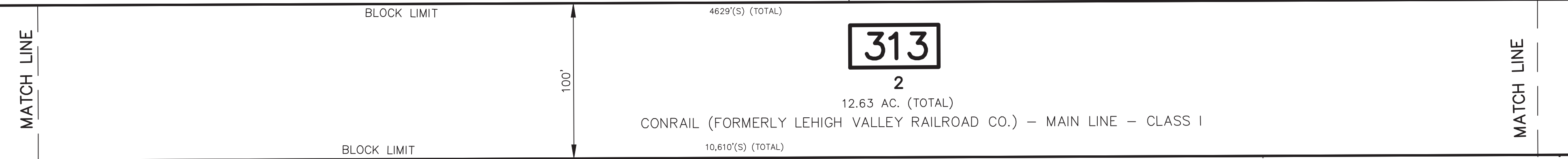
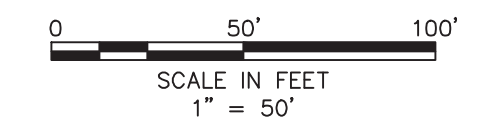
SHEET 11

SHEET 13



THIS MAP HAS BEEN REDRAWN USING COMPUTER AIDED DRAFTING DESIGN (CADD) BASED ON THE MAP PREPARED IN 1930.

THE AREAS, BOUNDARIES AND DIMENSIONS SHOWN ON THIS TAX MAP ARE DERIVED FROM GROUND SURVEYS, AERIAL SURVEYS, RECORDED PLANS, MAPS, DEEDS AND WILLS AND ARE TO BE USED FOR ASSESSMENT PURPOSES ONLY.



SHEET 16

SHEET 17

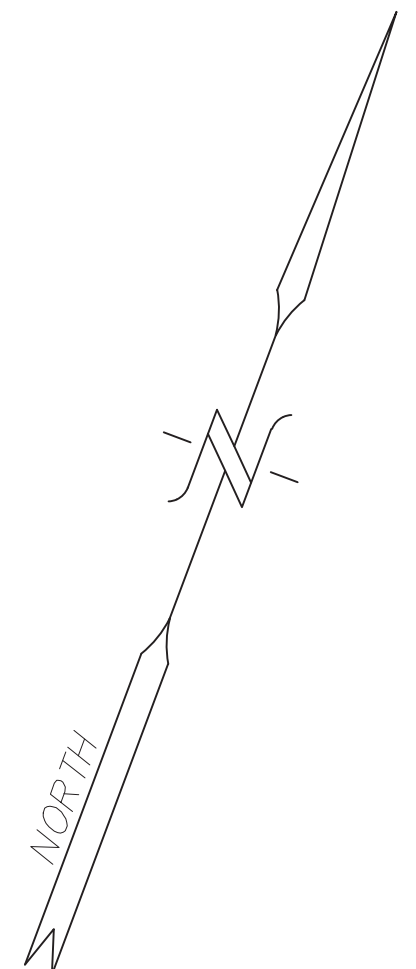
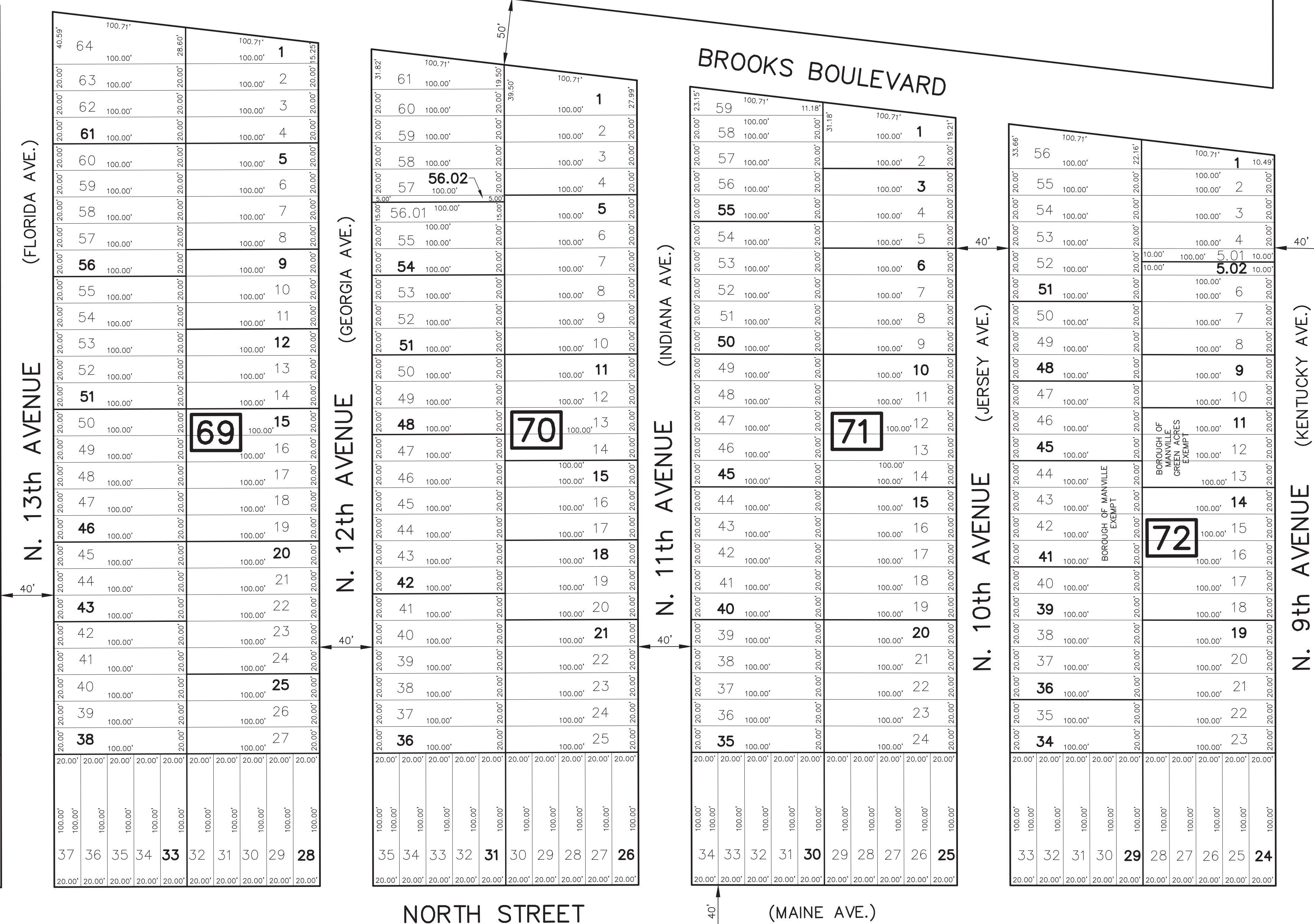
TAX MAP
 BOROUGH OF MANVILLE
 SOMERSET COUNTY, NEW JERSEY
 SCALE: 1"= 50' AUGUST 2018
 CARL M. HERRMAN, P.L.S.
 VAN CLEEF ENGINEERING ASSOCIATES
 755 MEMORIAL PKWY., SUITE 110, PHILLIPSBURG, NJ 08865
 TO SHOW CONDITIONS AS OF: AUGUST 2018

REVISIONS		
DATE	L.S. NAME	L.S. No.

SHEET 9

SHEET 12

SHEET 14



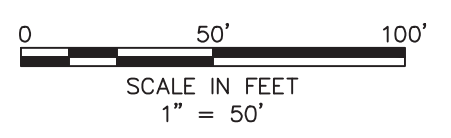
F:\Projects\2450 Manville_2450_GEN_ENG\002 Tax Maps\TAX MAP-ACAD_CONVERT\WORKING DWG\MANVILLE TAX MAPS.dwg 8/1/2013

MATCH LINE

MATCH LINE

SHEET 17

SHEET 18



THIS MAP HAS BEEN REDRAWN USING COMPUTER AIDED DRAFTING DESIGN (CADD) BASED ON THE MAP PREPARED IN 1930.

THE AREAS, BOUNDARIES AND DIMENSIONS SHOWN ON THIS TAX MAP ARE DERIVED FROM GROUND SURVEYS, AERIAL SURVEYS, RECORDED PLANS, MAPS, DEEDS AND WILLS AND ARE TO BE USED FOR ASSESSMENT PURPOSES ONLY.

TAX MAP
BOROUGH OF MANVILLE
 SOMERSET COUNTY, NEW JERSEY
 SCALE: 1"= 50' AUGUST 2018
CARL M. HERRMAN, P.L.S.
 VAN CLEEF ENGINEERING ASSOCIATES
 755 MEMORIAL PKWY., SUITE 110, PHILLIPSBURG, NJ 08865
 TO SHOW CONDITIONS AS OF: AUGUST 2018

REVISIONS		
DATE	L.S. NAME	L.S. No.

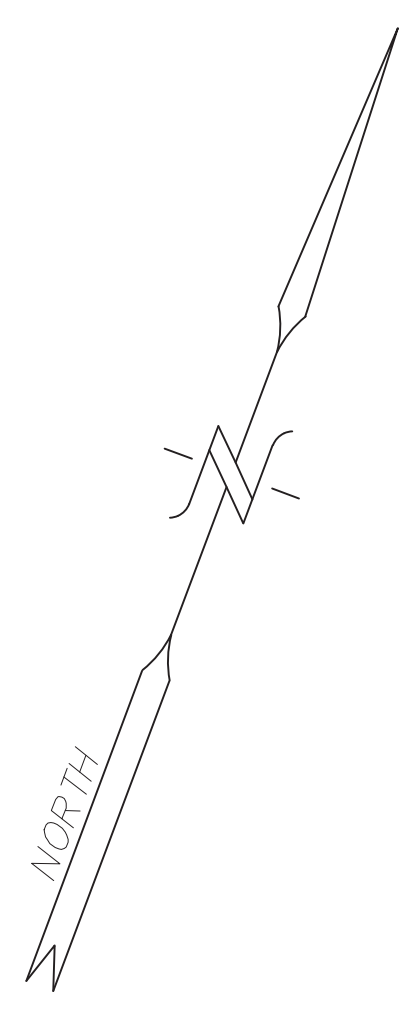
SHEET 10

SHEET 13

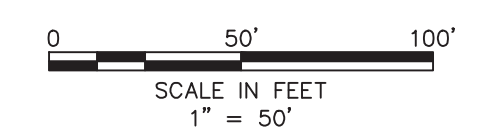
SHEET 15

SHEET 18

SHEET 19



F:\Projects\2450 Manville\2450_GEN_ENG\002 Tax Maps\TAX MAP-ACAD_CONVERT_WORKING DWG\MANVILLE TAX MAPS.dwg 8/1/2013



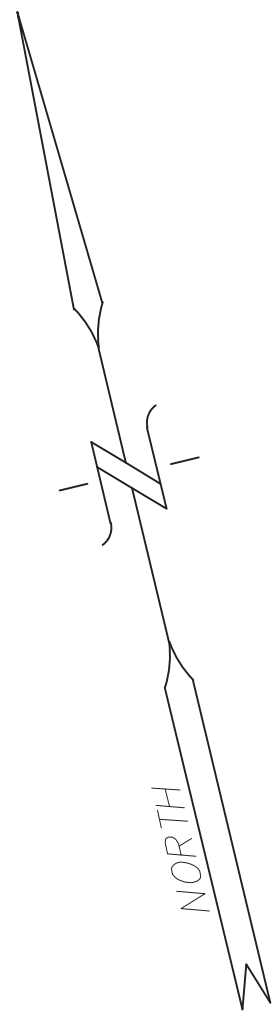
THIS MAP HAS BEEN REDRAWN USING COMPUTER AIDED DRAFTING DESIGN (CADD) BASED ON THE MAP PREPARED IN 1930.

THE AREAS, BOUNDARIES AND DIMENSIONS SHOWN ON THIS TAX MAP ARE DERIVED FROM GROUND SURVEYS, AERIAL SURVEYS, RECORDED PLANS, MAPS, DEEDS AND WILLS AND ARE TO BE USED FOR ASSESSMENT PURPOSES ONLY.

TAX MAP
BOROUGH OF MANVILLE
 SOMERSET COUNTY, NEW JERSEY
 SCALE: 1"= 50' AUGUST 2018
CARL M. HERRMAN, P.L.S.
 VAN CLEEF ENGINEERING ASSOCIATES
 755 MEMORIAL PKWY., SUITE 110, PHILLIPSBURG, NJ 08865
 TO SHOW CONDITIONS AS OF: AUGUST 2018

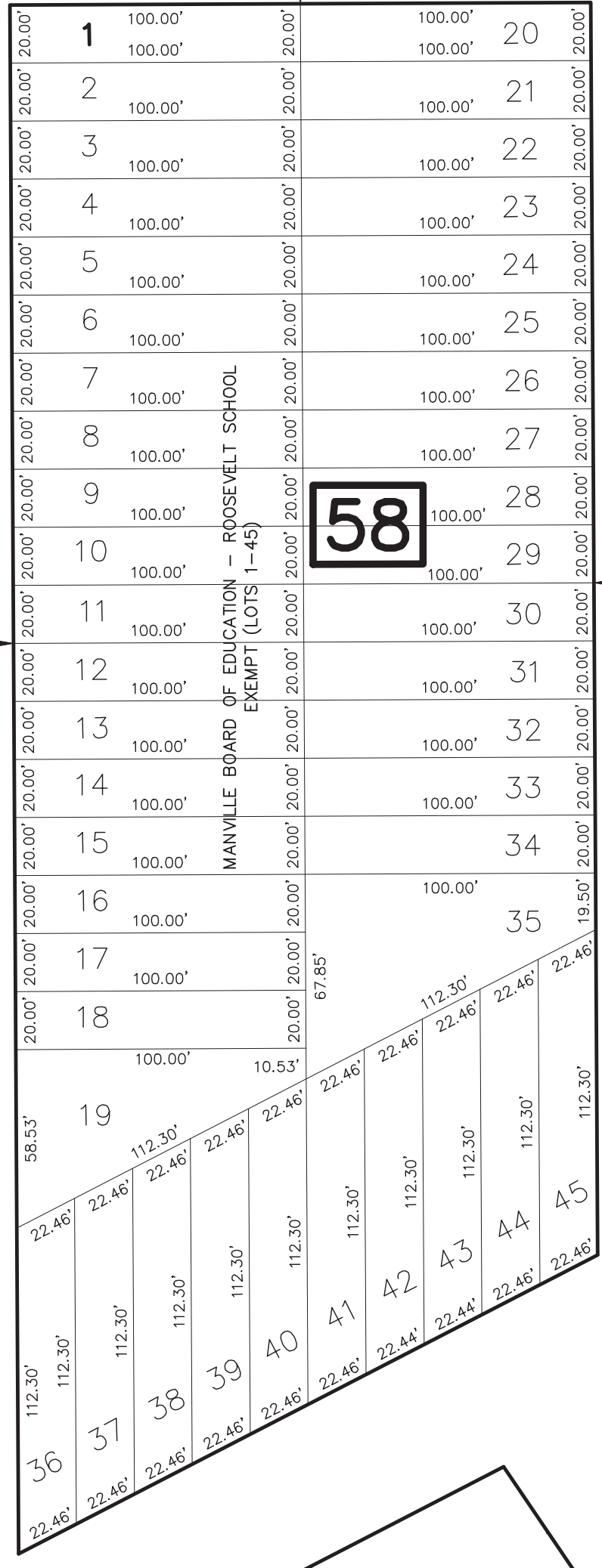
REVISIONS		
DATE	L.S. NAME	L.S. No.

SHEET 6

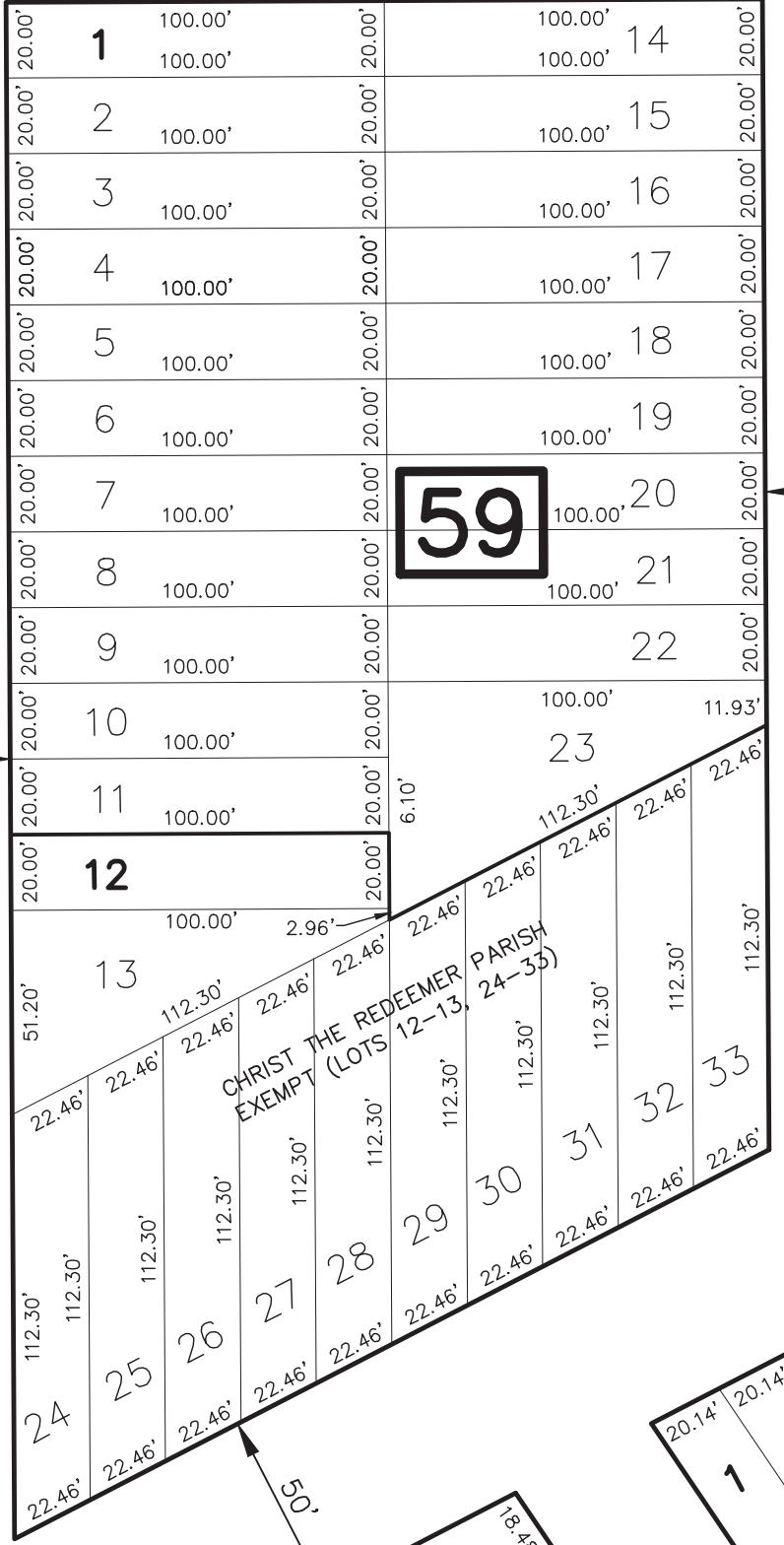


SHEET 10

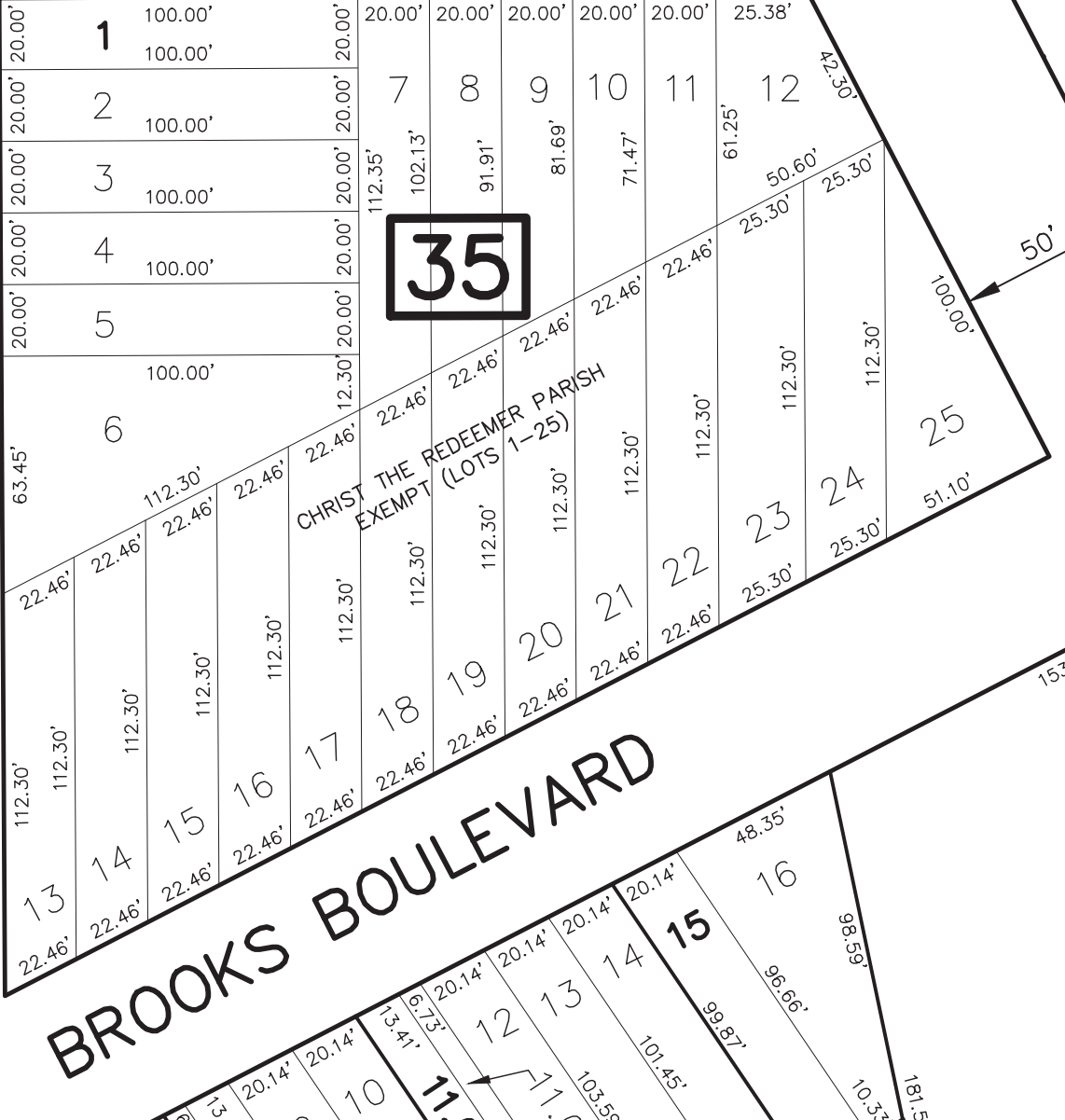
N. 5th AVENUE (UTAH AVE.)



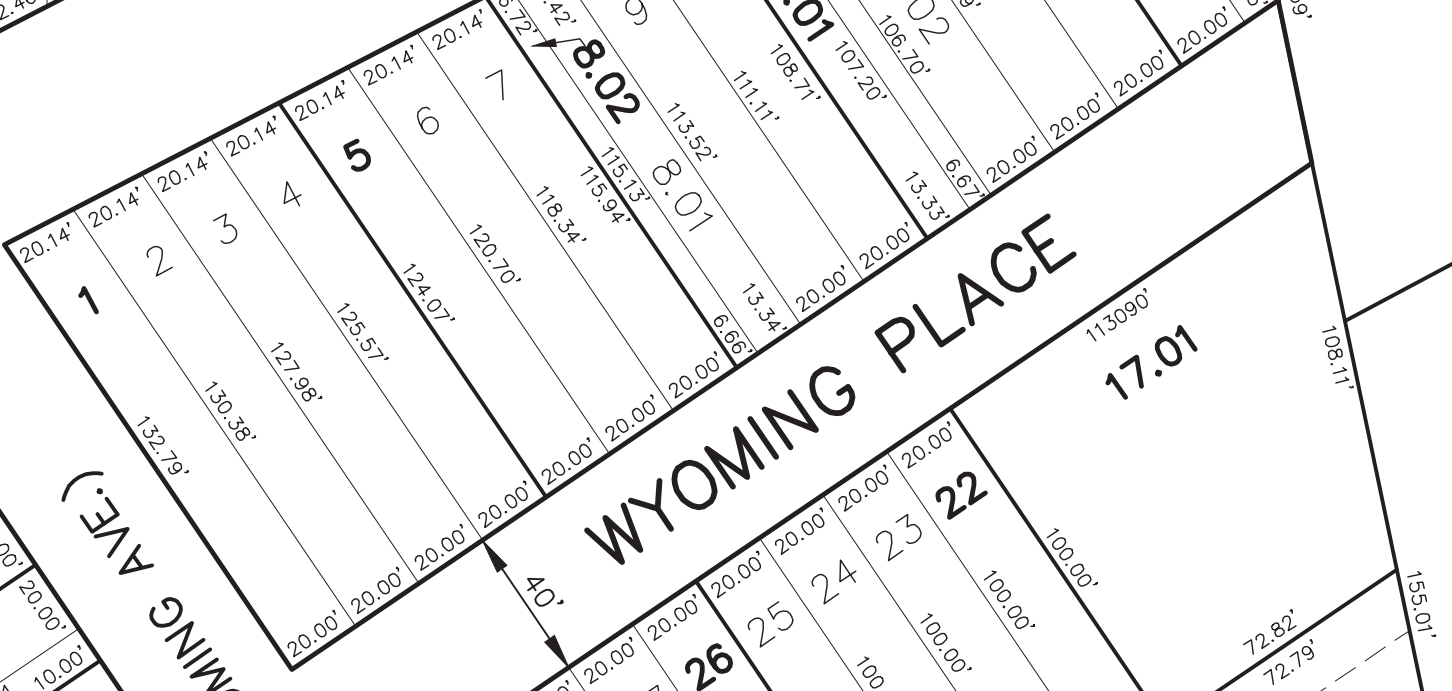
N. 4th AVENUE (VIRGINIA AVE.)



N. 3rd AVE. (WYOMING AVE.)



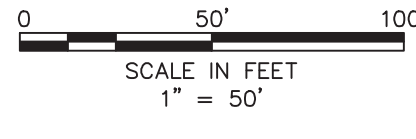
BROOKS BOULEVARD



WYOMING PLACE

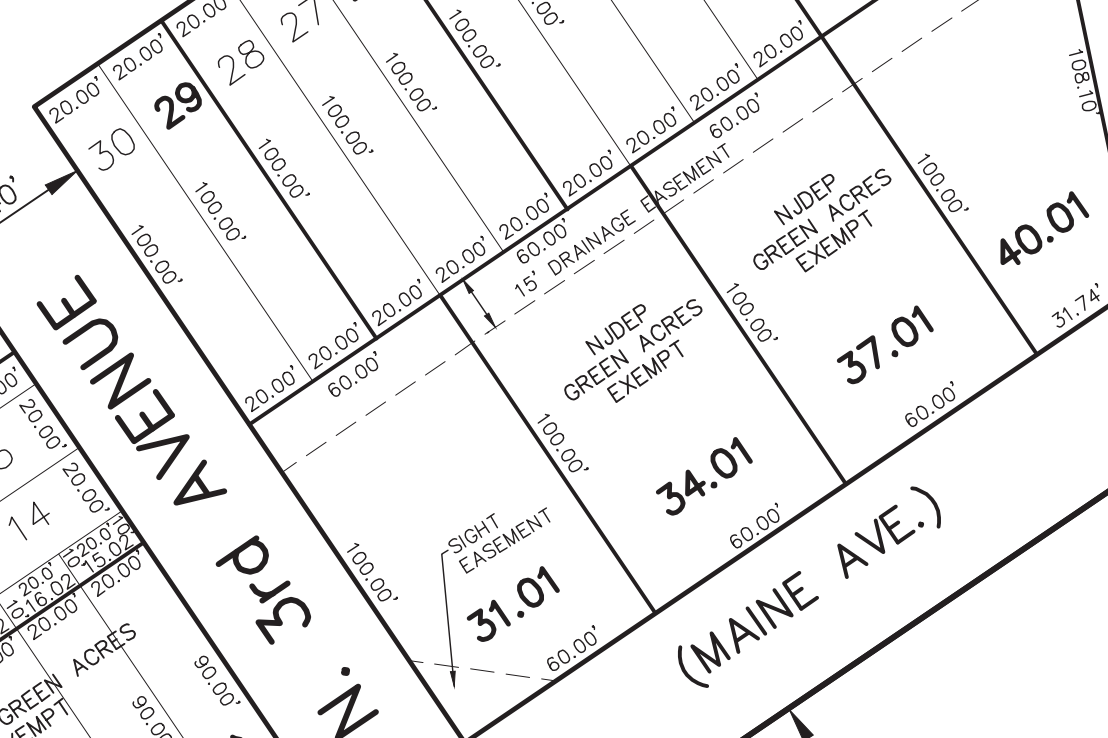


SHEET 14



NORTH STREET

N. 3rd AVENUE (WYOMING AVE.)



(MAINE AVE.)

CONRAIL (FORMERLY LEHIGH VALLEY RAILROAD CO.) - MAIN LINE - CLASS I

CONRAIL - CLASS II

SHEET 19

N. 1st AVENUE

N. MAIN STREET
(MILLSTONE ROAD)
(COUNTY ROUTE 533)

SHEET 61

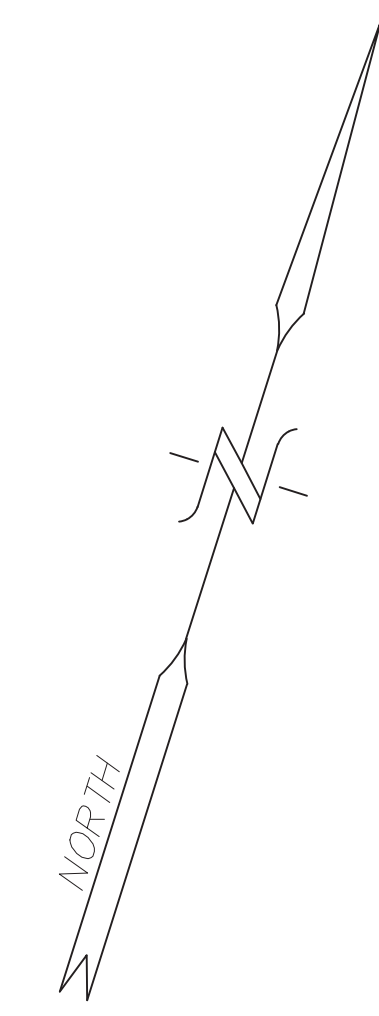
TAX MAP
 BOROUGH OF MANVILLE
 SOMERSET COUNTY, NEW JERSEY
 SCALE: 1"= 50' AUGUST 2018
 CARL M. HERRMAN, P.L.S.
 VAN CLEEF ENGINEERING ASSOCIATES
 755 MEMORIAL PKWY., SUITE 110, PHILLIPSBURG, NJ 08865
 TO SHOW CONDITIONS AS OF: AUGUST 2018

THIS MAP HAS BEEN REDRAWN USING COMPUTER AIDED DRAFTING DESIGN (CADD) BASED ON THE MAP PREPARED IN 1930.

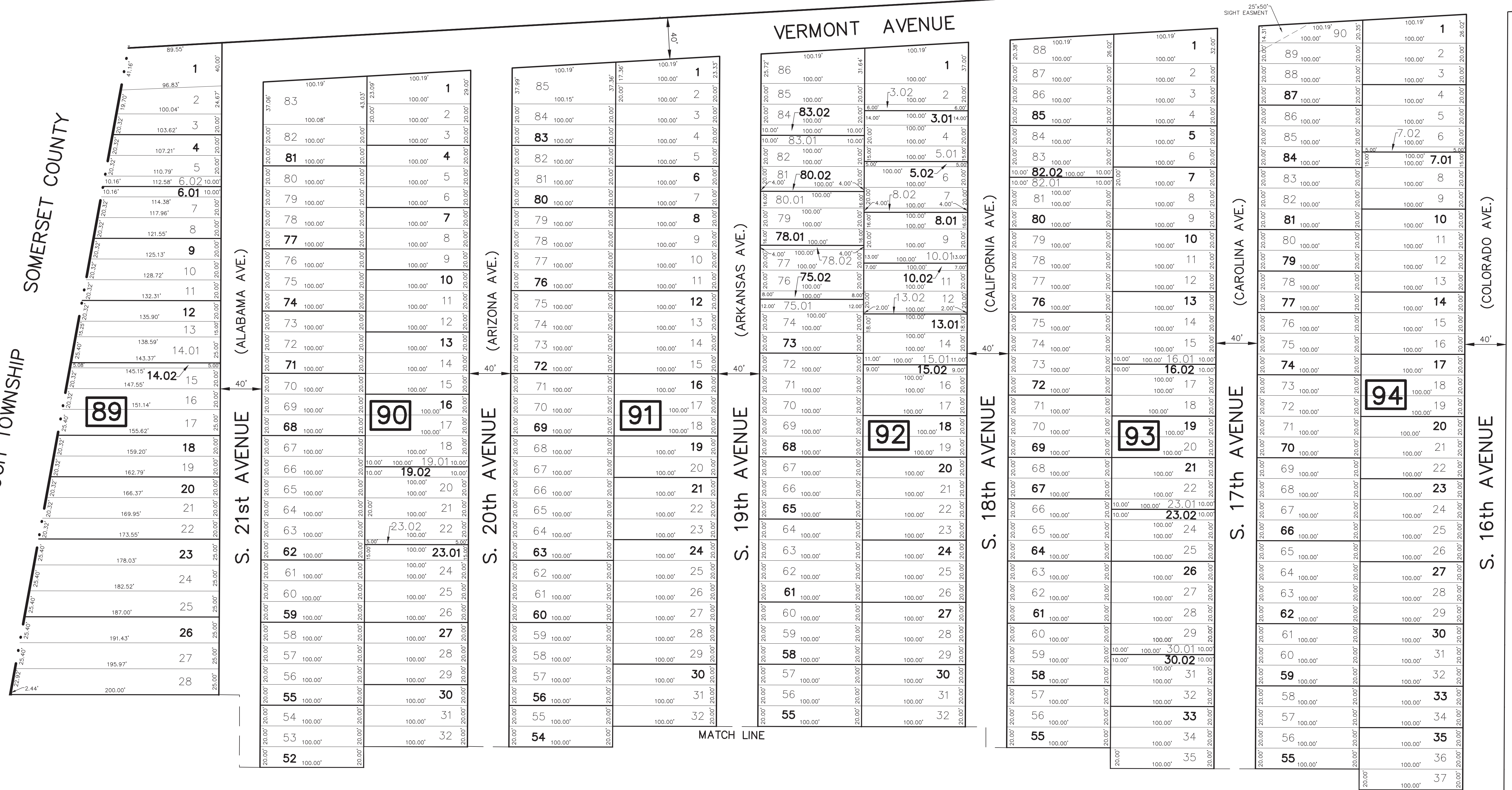
THE AREAS, BOUNDARIES AND DIMENSIONS SHOWN ON THIS TAX MAP ARE DERIVED FROM GROUND SURVEYS, AERIAL SURVEYS, RECORDED PLANS, MAPS, DEEDS AND WILLS AND ARE TO BE USED FOR ASSESSMENT PURPOSES ONLY.

REVISIONS		
DATE	L.S. NAME	L.S. No.

SHEET 11



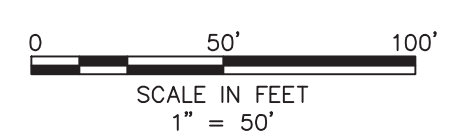
HILLSBOROUGH TOWNSHIP
SOMERSET COUNTY



SHEET 17

F:\Projects\2450 Manville_2450_GEN_ENG\002 Tax Maps\TAX MAP-ACAD_CONVERT_WORKING DWG\MANVILLE TAX MAPS.dwg 8/1/2013

SHEET 20



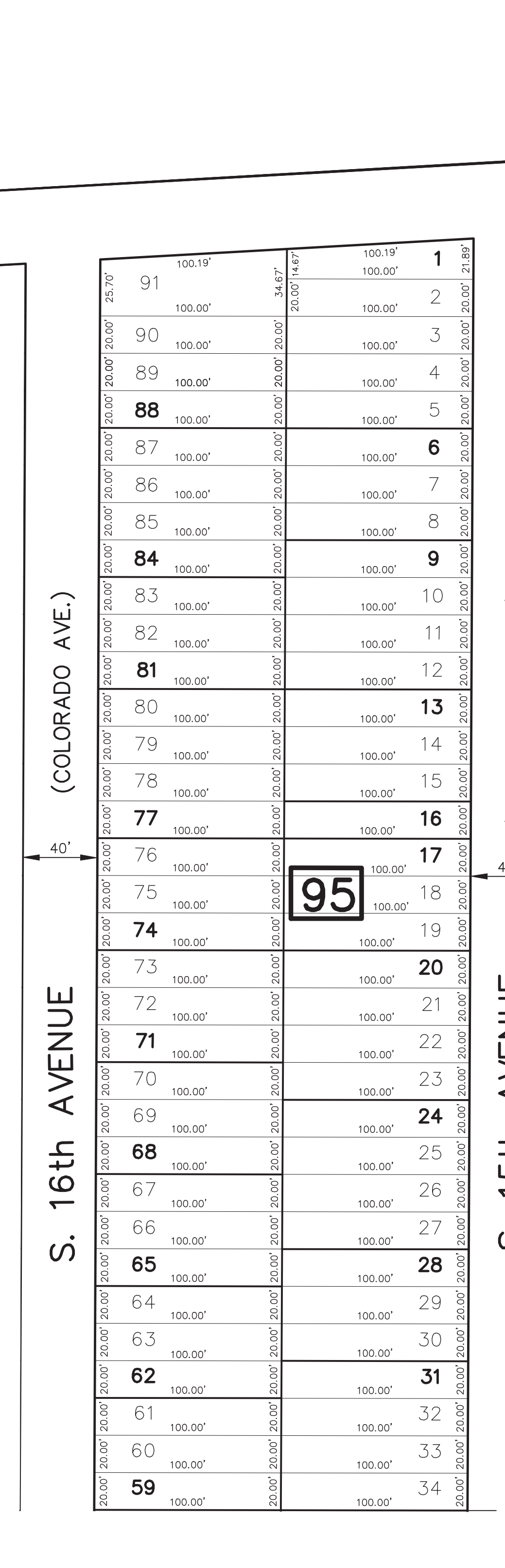
THIS MAP HAS BEEN REDRAWN USING COMPUTER AIDED DRAFTING DESIGN (CADD) BASED ON THE MAP PREPARED IN 1930.

THE AREAS, BOUNDARIES AND DIMENSIONS SHOWN ON THIS TAX MAP ARE DERIVED FROM GROUND SURVEYS, AERIAL SURVEYS, RECORDED PLANS, MAPS, DEEDS AND WILLS AND ARE TO BE USED FOR ASSESSMENT PURPOSES ONLY.

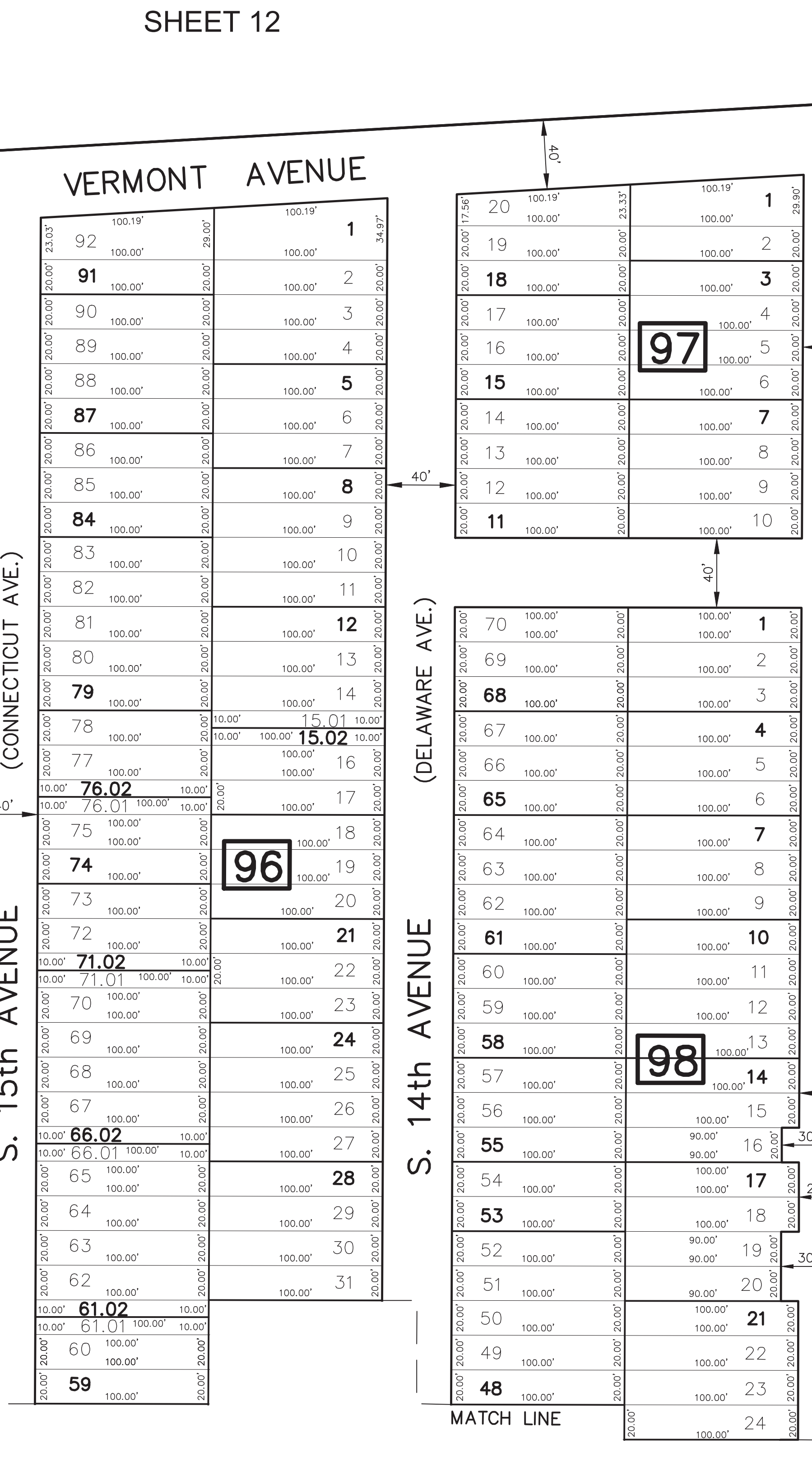
TAX MAP
 BOROUGH OF MANVILLE
 SOMERSET COUNTY, NEW JERSEY
 SCALE: 1"= 50' AUGUST 2018
 CARL M. HERRMAN, P.L.S.
 VAN CLEEF ENGINEERING ASSOCIATES
 755 MEMORIAL PKWY., SUITE 110, PHILLIPSBURG, NJ 08865
 TO SHOW CONDITIONS AS OF: AUGUST 2018

REVISIONS		
DATE	L.S. NAME	L.S. No.

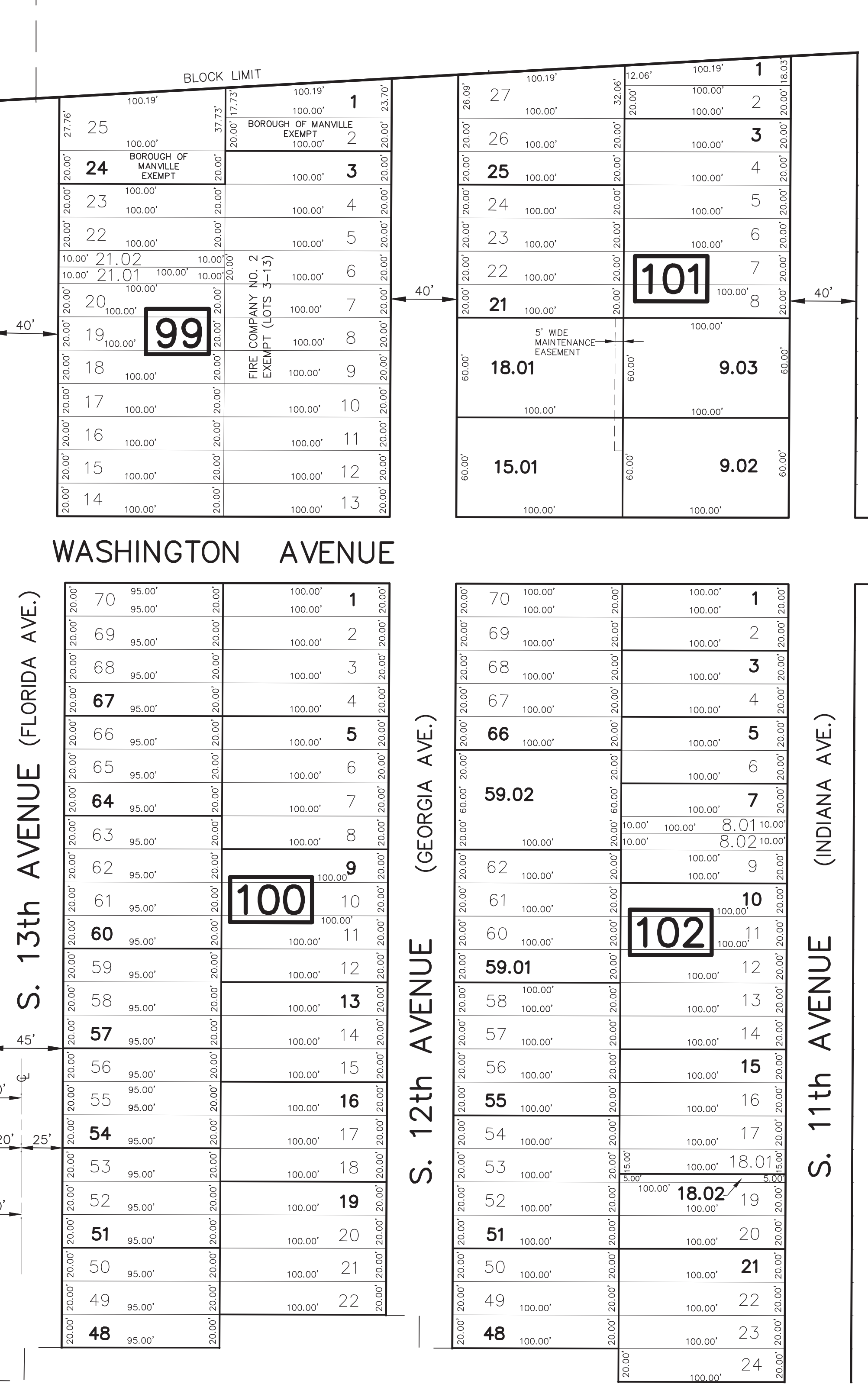
SHEET 16



SHEET 12

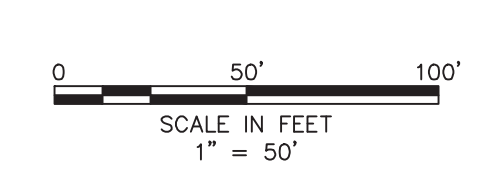


SHEET 13



SHEET 18

SHEET 21



THIS MAP HAS BEEN REDRAWN USING COMPUTER AIDED DRAFTING DESIGN (CADD) BASED ON THE MAP PREPARED IN 1930.

THE AREAS, BOUNDARIES AND DIMENSIONS SHOWN ON THIS TAX MAP ARE DERIVED FROM GROUND SURVEYS, AERIAL SURVEYS, RECORDED PLANS, MAPS, DEEDS AND WILLS AND ARE TO BE USED FOR ASSESSMENT PURPOSES ONLY.

TAX MAP
 BOROUGH OF MANVILLE
 SOMERSET COUNTY, NEW JERSEY
 SCALE: 1"= 50' AUGUST 2018
 CARL M. HERRMAN, P.L.S.
 VAN CLEEF ENGINEERING ASSOCIATES
 755 MEMORIAL PKWY., SUITE 110, PHILLIPSBURG, NJ 08865
 TO SHOW CONDITIONS AS OF: AUGUST 2018

F:\Projects\2450 Manville_2450_GEN_ENG\002 Tax Maps\TAX MAP-ACAD_CONVERT_WORKING DWG\MANVILLE TAX MAPS.dwg 8/1/2013

